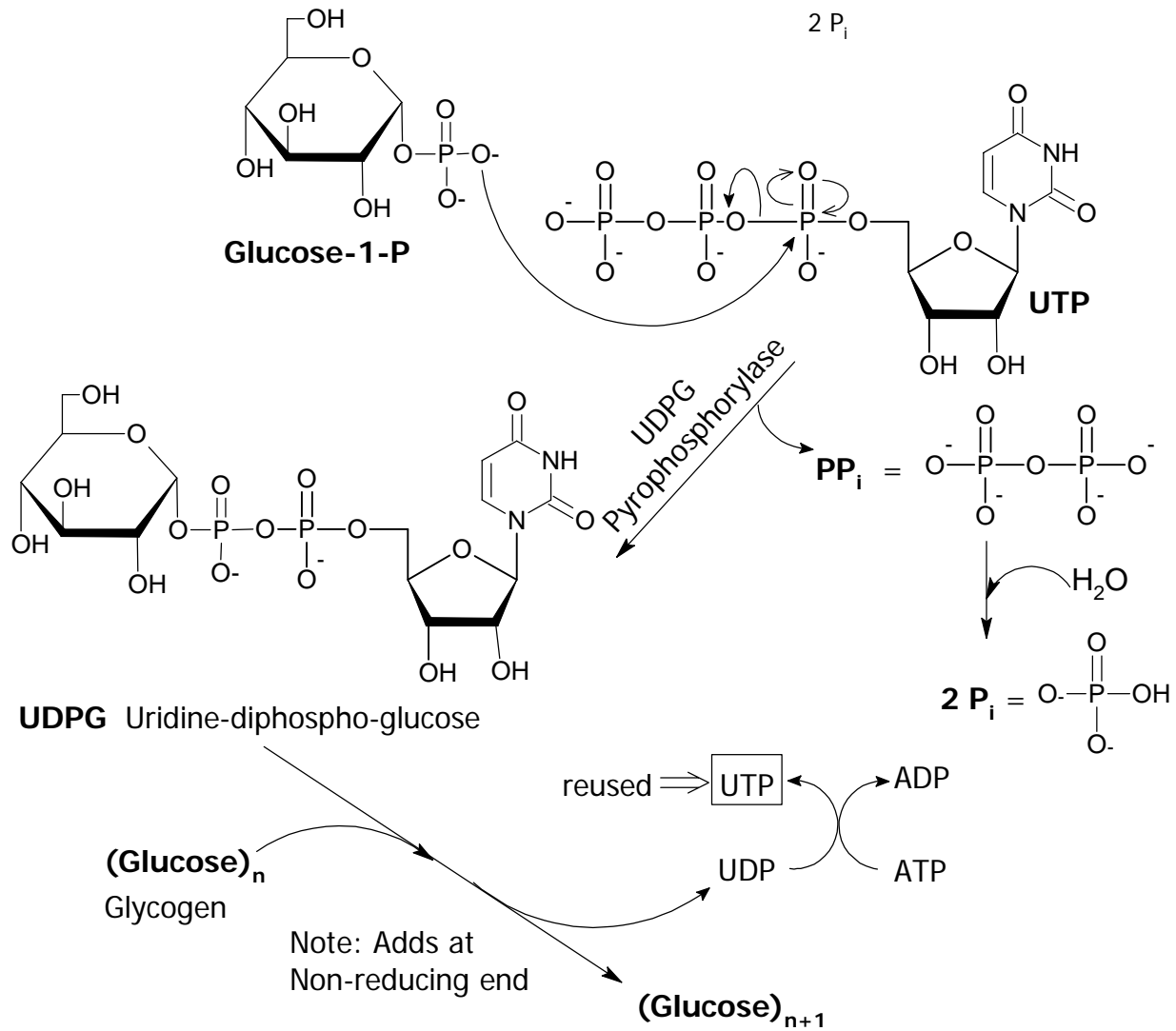
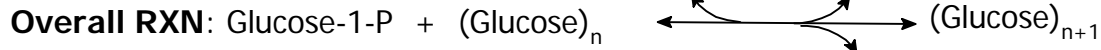
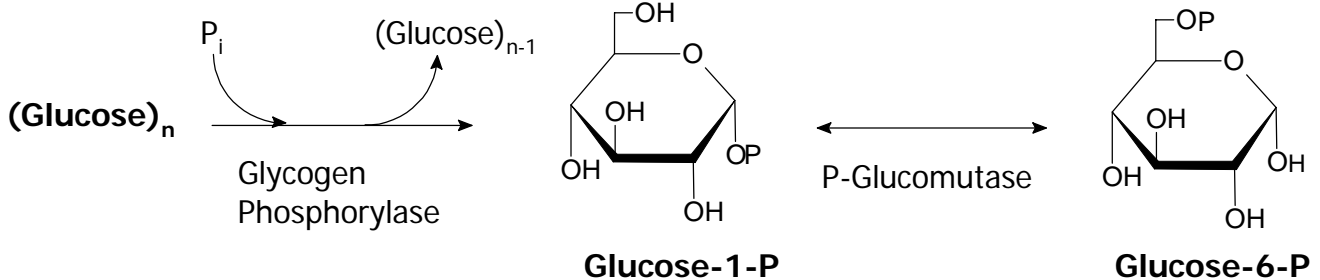


# Making and Breaking Glycogen

## Glycogen Synthase



## Glycogen Phosphorylase



**Note:** glycogen phosphorylase cleaves the 1-4 linkage of the non-reducing end of glycogen. The product, glucose-6-P, enters the glycolysis as an intermediate.

Based on a Handout Created by '01 TA Chris Allen